

Photoshop

Mixed Media

#다양성, #조화

load, #[,] , #layer,

brush, #pattern, #layerstyle, #font

Splatters, #Grunge, #Nature / Plants

다양성(多様性, Diversity)

하나의 대상으로 많은 양의 또는 여러가지의 성질을 표현할 수 있다.



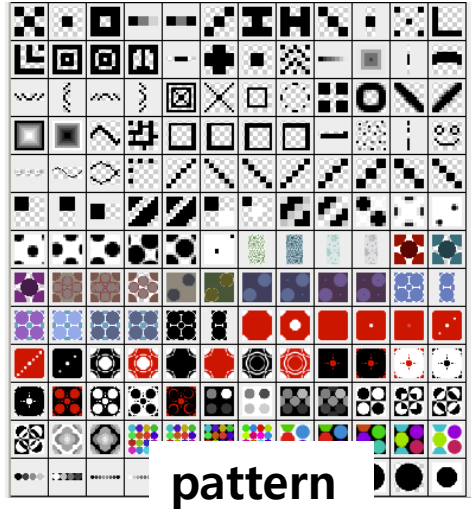
조화(Harmony)

두 개 이상의 여러 디자인 요소들의 상호관계가 분리되지 않고 잘 어울려 나타나는 미적 형식이다. 균형감을 잃지 않는 상태에서의 변화와 통일을 포함한 전체적인 결합 상태이기도 한다.

레이아웃은 효과적인 커뮤니케이션을 위해 설정한 지면에 레이아웃 구성요소들을 조화롭고 균형 있게 배치하는 작업이다.

Photoshop Mixed Media

- 포토샵 및 응용 프로그램은 내부 경로를 통해 외부 소스를 불러 들일 수 있다.
- 포토샵에 활용 가능한 오픈소스의 종류 알아보기
- 각 외부 오픈소스를 포토샵내에 불러오는 방법 파악
- 주제와 부합하는 오픈소스 찾기



Brush 사용법

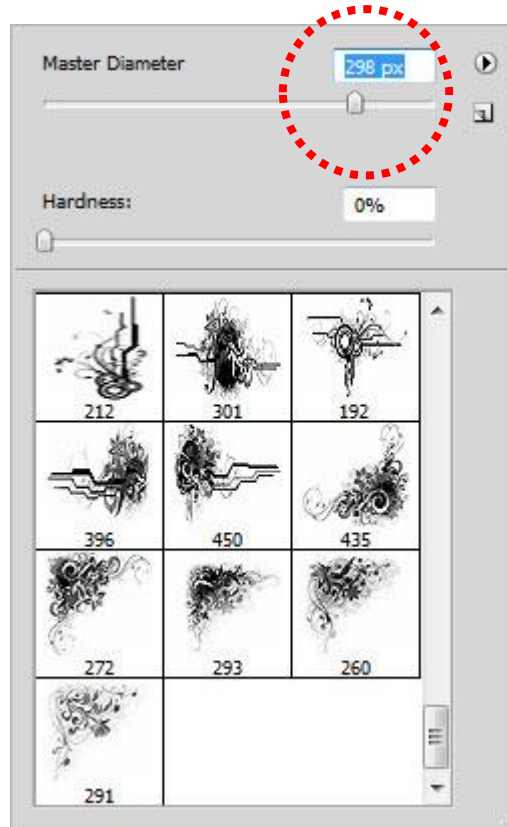
1. Download brush
2. Load brush(부러쉬 크기 조정)
3. **Create a new layer**
4. Color setting(white color and **Opacity of 50%**)

<http://yoonmi.net/xe/brush>



Download

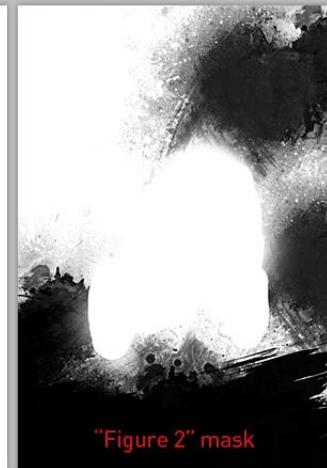
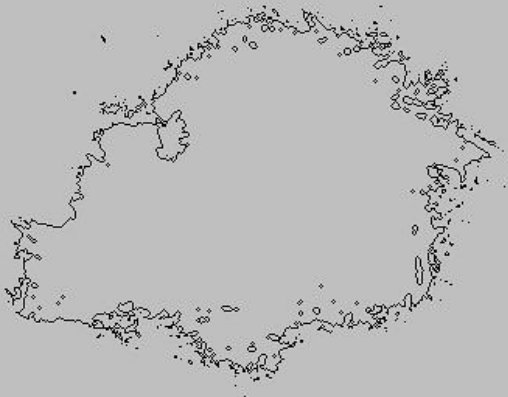
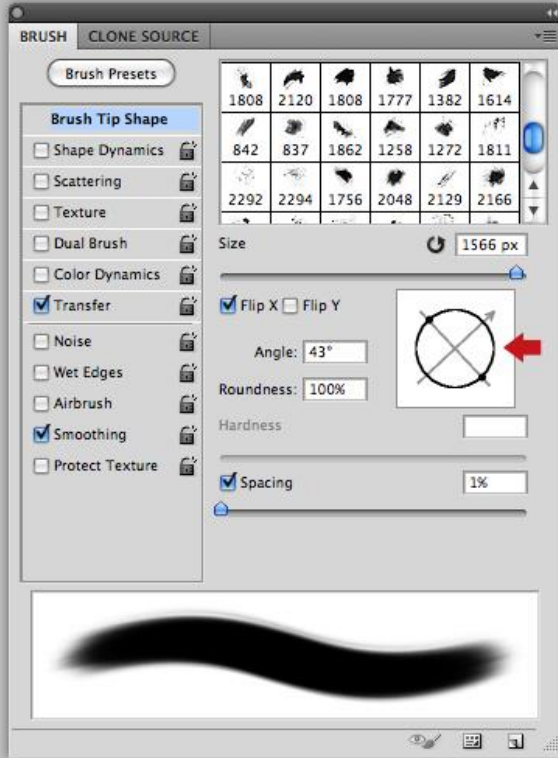
Brush setting



부러쉬 크기 조정 단축키

[,]

Load the "grunge_brushes.abr"



<http://www.brusheezy.com/>



Featured Free Photoshop Brushes



<https://www.brushking.eu/>



<https://myphotoshopbrushes.com/>

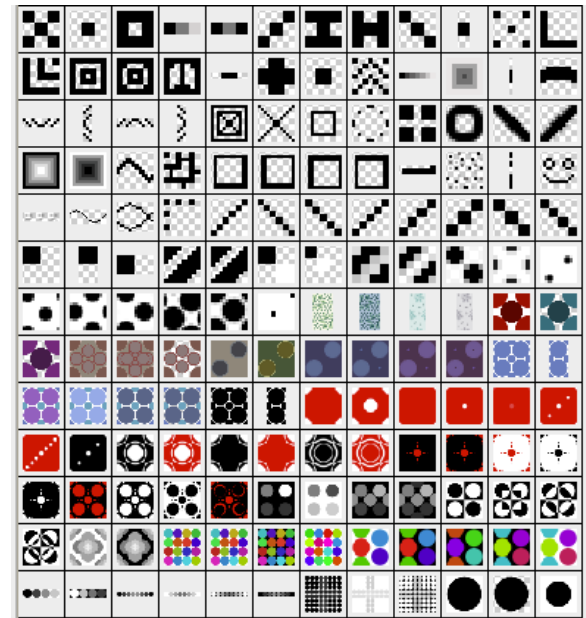
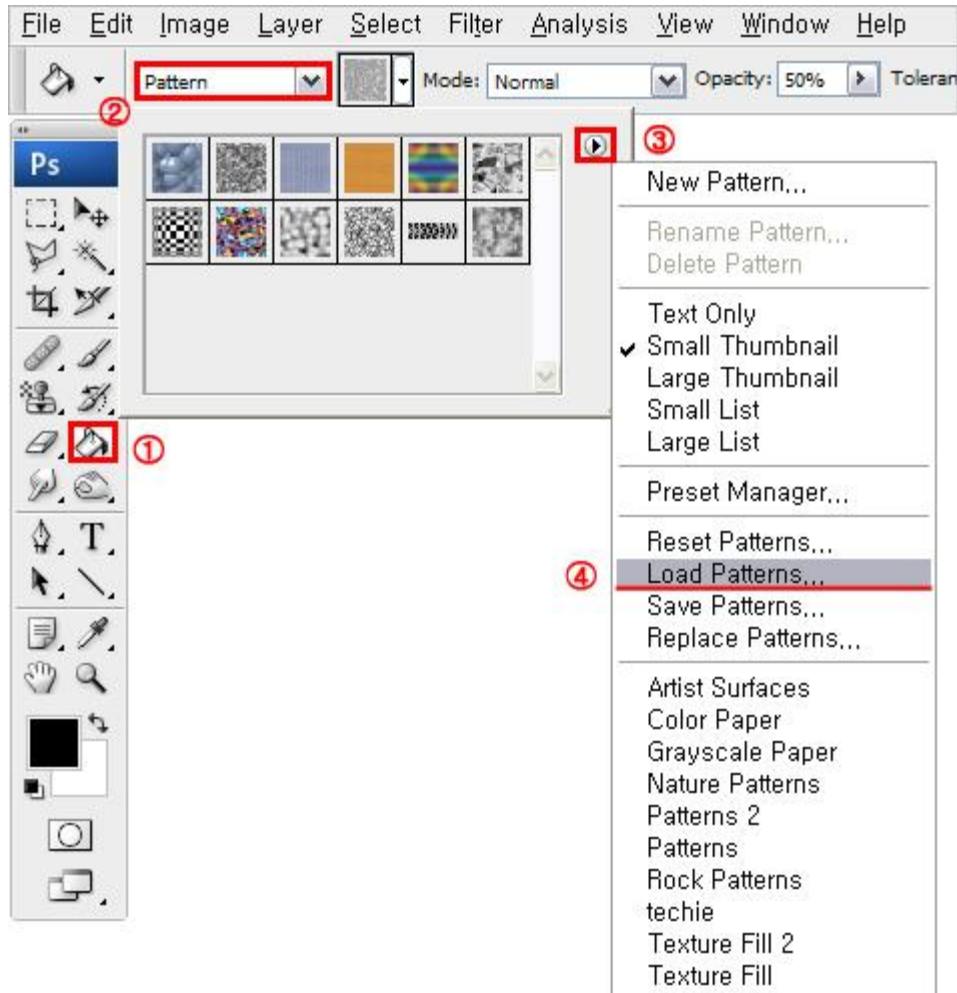


pattern Download(*.pat)



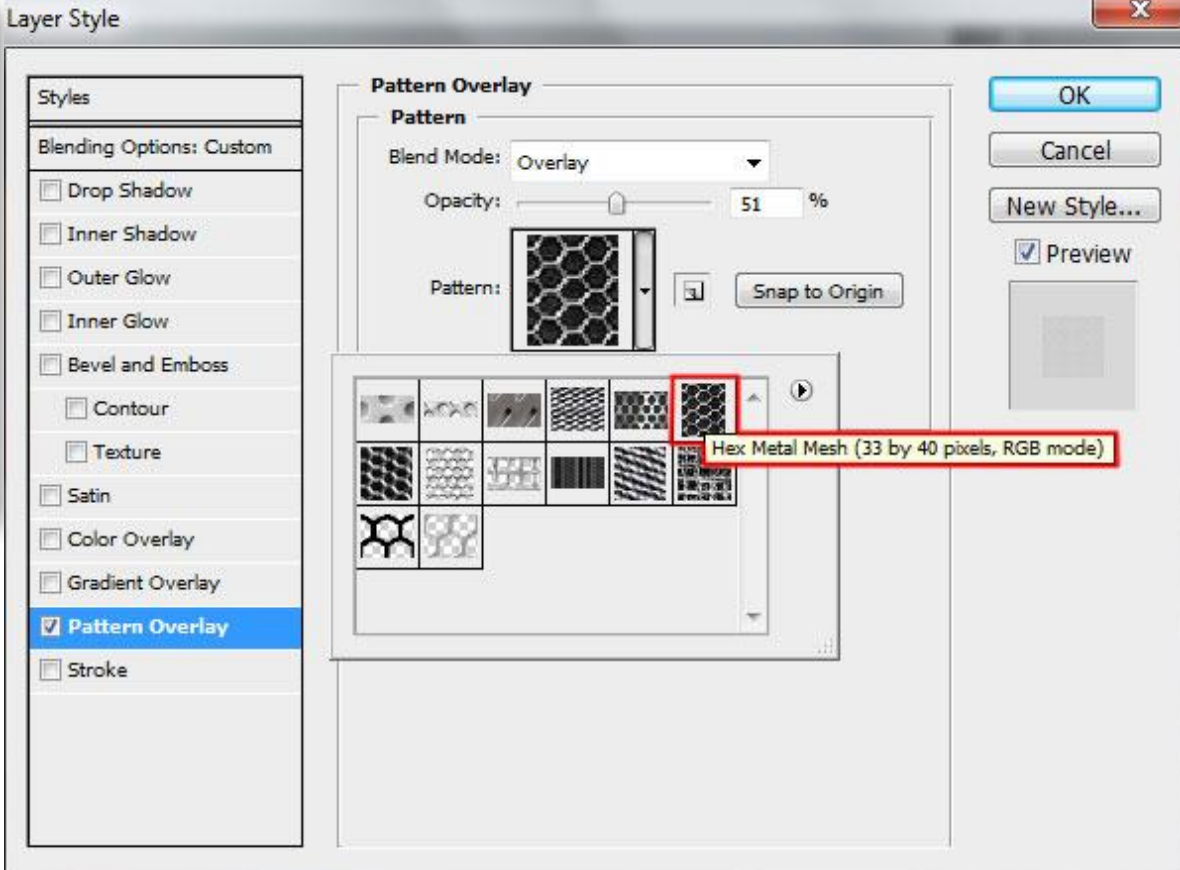
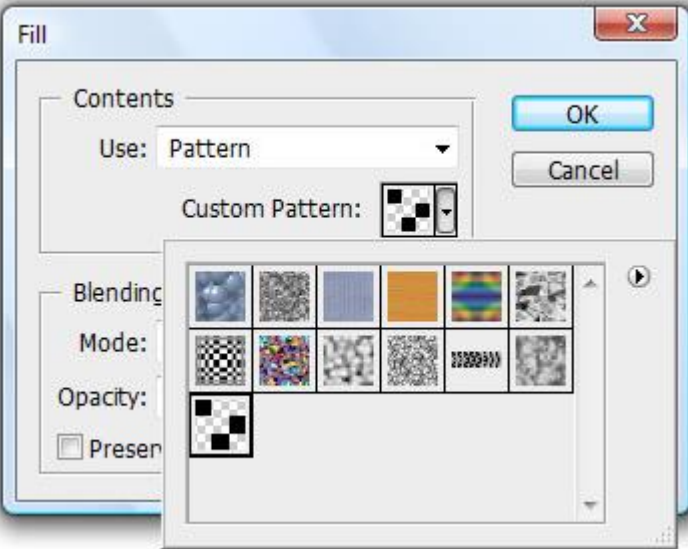
pattern 사용법

1. Download pattern
2. **Create a new layer**
3. **Selection**
4. Fill or paint bucket
5. Load pattern



fill/

Layer style/ pattern Overlay



pattern 등록하기

The image shows a screenshot of the Adobe Photoshop interface. The main canvas displays a pattern of white circles on a teal background. The top menu bar includes 'Photoshop', 'File', 'Edit', 'Image', 'Layer', 'Select', 'Filter', 'Analysis', '3D', 'View', 'Window', and 'Help'. The title bar reads 'Untitled-1 @ 100% (RGB/8) *'. The Layers panel on the right shows a 'Pattern Fill 1' layer selected above a 'Background' layer. The 'Pattern Fill' dialog box is open, showing a preview of the pattern, a 'Scale' of 100%, and checked options for 'Link with Layer' and 'Snap to Origin'. A text box in the center of the canvas says 'There are different ways to use patterns'. A text box on the right says '1. Click the adjustment layers icon and choose pattern'. At the bottom right, there is a blue button with the text 'www.graphicsdepot.org'.

Click and drag to reposition the pattern.

Untitled-1 @ 100% (RGB/8) *

There are different ways to use patterns

LAYERS

Normal Opacity: 100%

Lock: [] [] [] [] Fill: 100%

Pattern Fill 1

Background

Pattern Fill

Scale: 100 %

Link with Layer

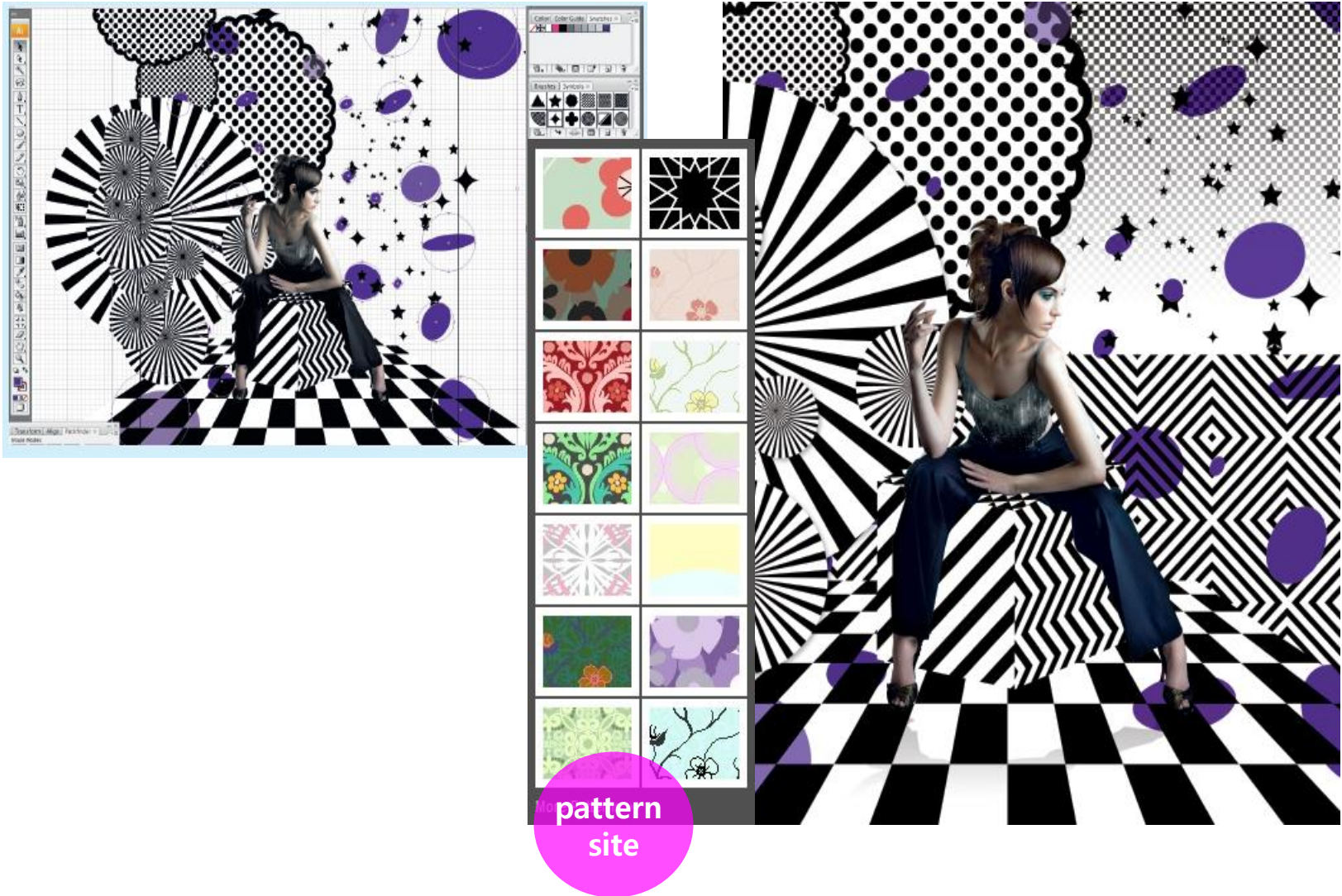
Snap to Origin

OK Cancel

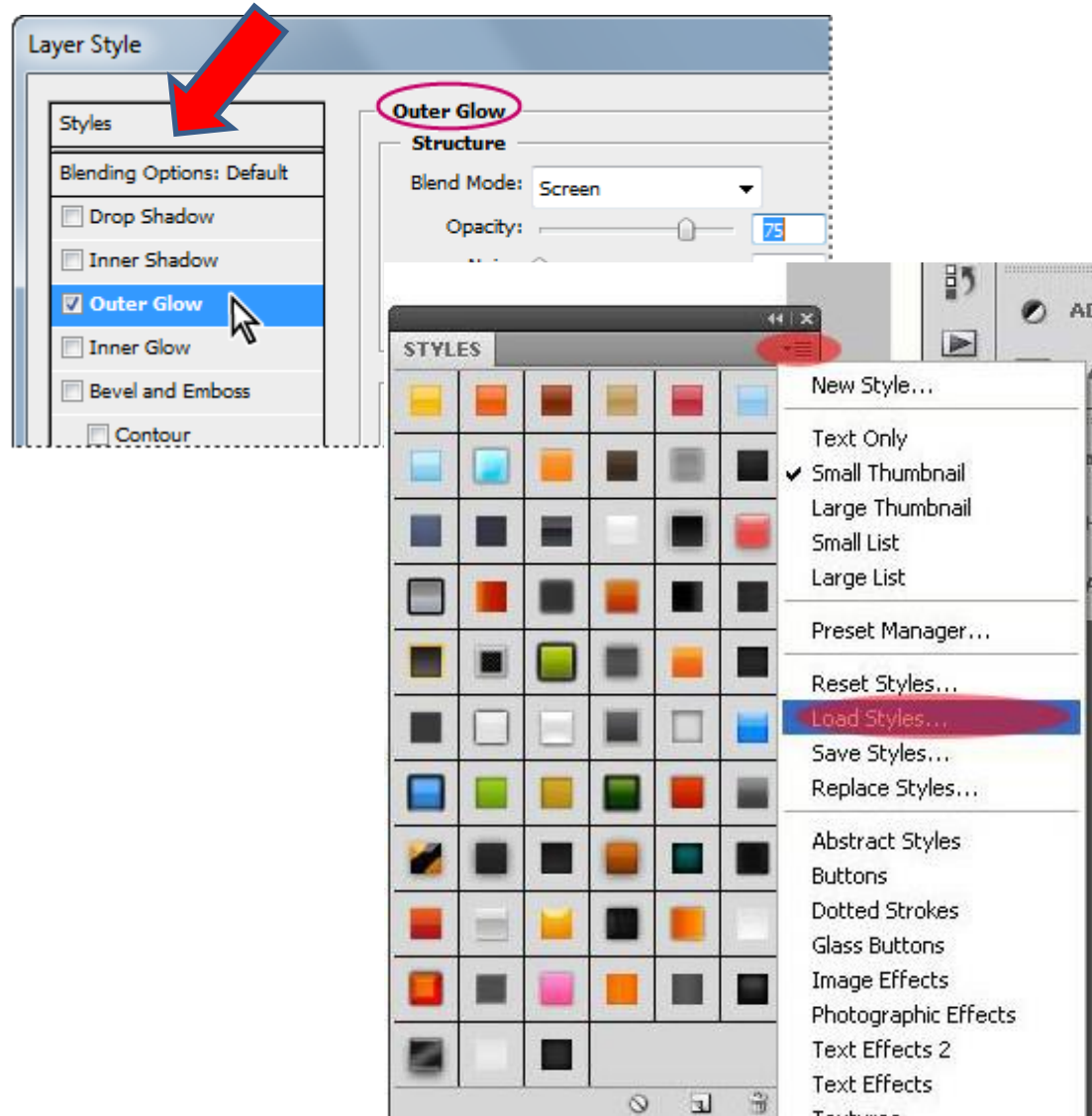
1. Click the adjustment layers icon and choose pattern

www.graphicsdepot.org

pattern 과 image 파일의 조합



Photoshop Layer Styles



1. SELECT TEXT, SHAPE, OR OTHER LAYER

2. CLICK LAYER STYLE ICON IN THE STYLES PALETTE



3. BASK IN THE GLORY OF BEAUTIFUL STYLES

PHOTOSHOP STYLES

PHOTOSHOP STYLES

The image shows a step-by-step tutorial on how to apply a style to a layer in Photoshop. It starts with a white fleur-de-lis shape on a dark background. The first step is to select the text, shape, or other layer. The second step is to click the layer style icon in the Styles palette. The final result is a gold, 3D-style fleur-de-lis shape with the text 'PHOTOSHOP STYLES' in a matching gold, 3D font.

<http://webneel.com/webneel/blog/ultimate-collection-500-photoshop-layer-styles-your-design-free-download>

Spoon

MEDIUM SIZE 3D gold style

Sample.

cookie

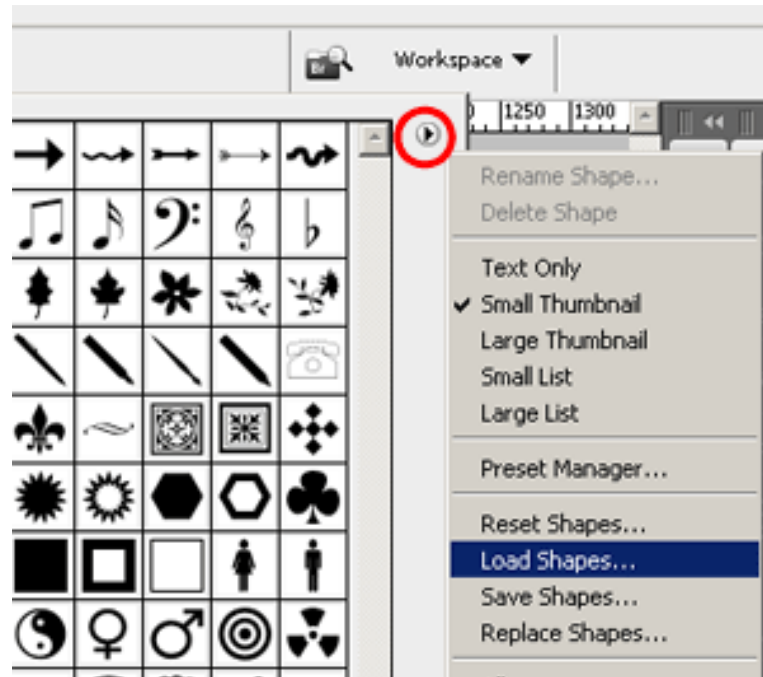
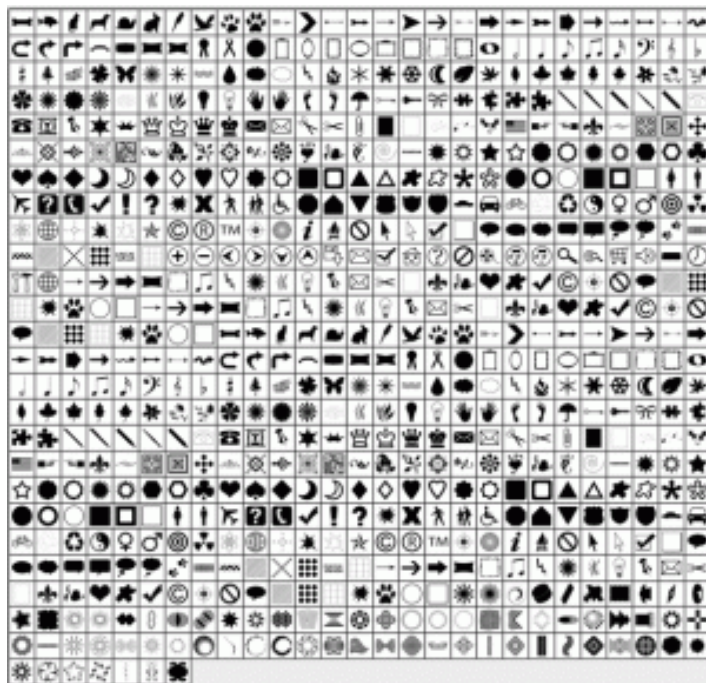
FUTURISTIC NIBIRU DIGITAL

500 Free Photoshop Layer Styles - Download

The advertisement features several examples of text styles. At the top, the word 'Spoon' is shown in a white, 3D, metallic font. Below it, 'Sample.' is in a green, 3D, cursive font. 'cookie' is shown in a brown, 3D, cookie-like font. At the bottom, there are six colorful, 3D, spherical buttons. The text 'FUTURISTIC NIBIRU DIGITAL' is displayed in a futuristic, metallic font. The overall theme is 3D and futuristic text styles.

<https://www.freecreatives.com/styles/photoshop-styles.html>

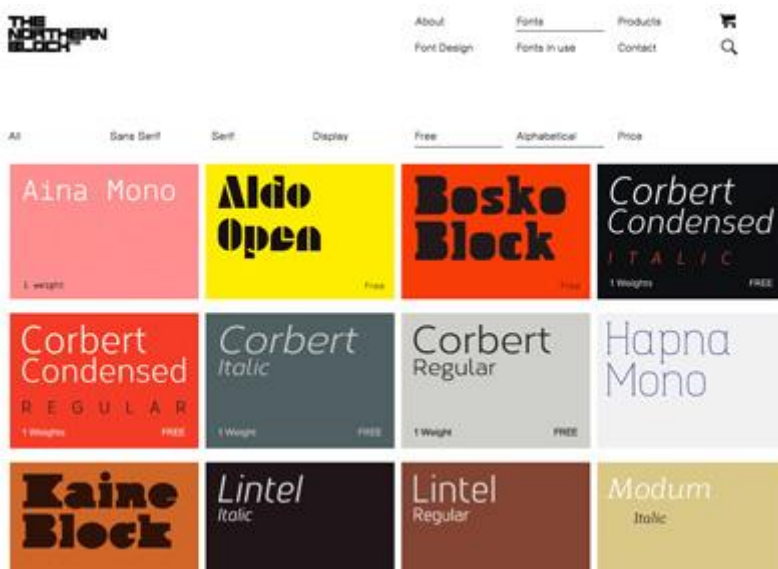
Photoshop shape Download(*.)



Photoshop free shape



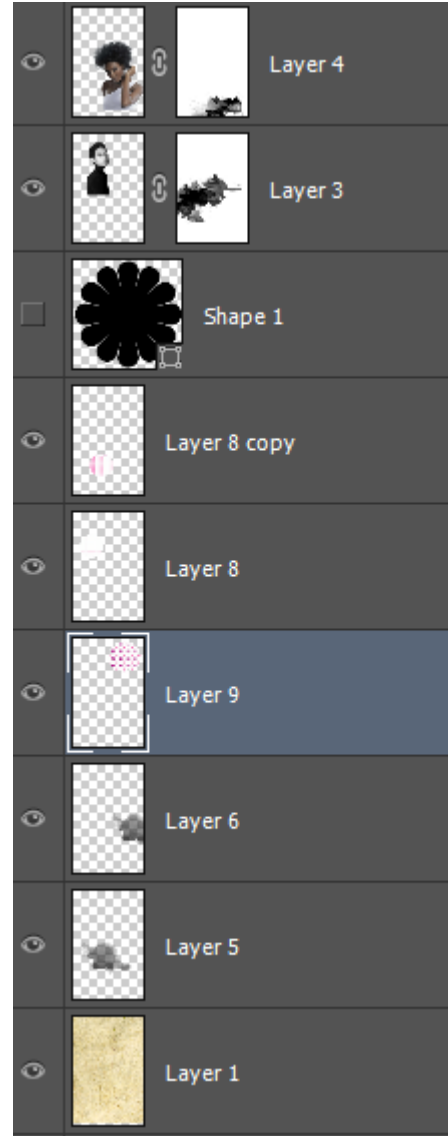
Graphic font Download(*.ttf)

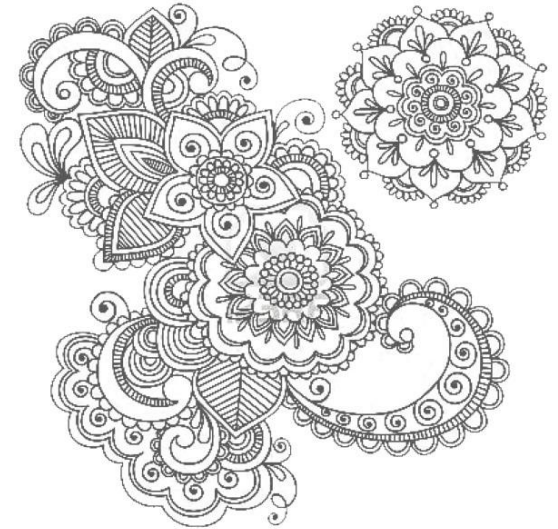
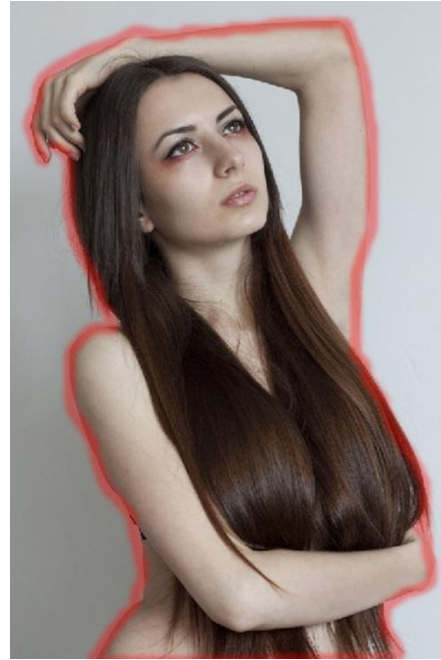


<http://www.thenorthernblock.co.uk/fonts/free>

dafont.com

하나의 layer에 하나의 미디어소스를 사용한다.
(이동, 크기조정 및 개별편집을 위해)





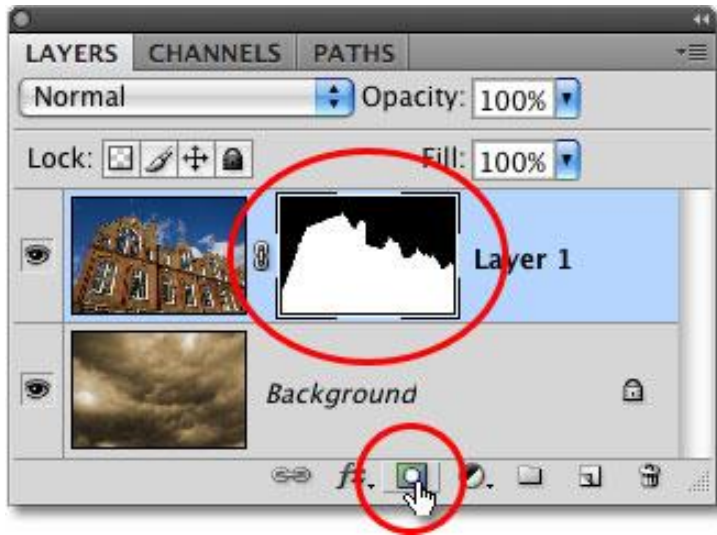


spring

2012.3.22

jung.hoe.jun

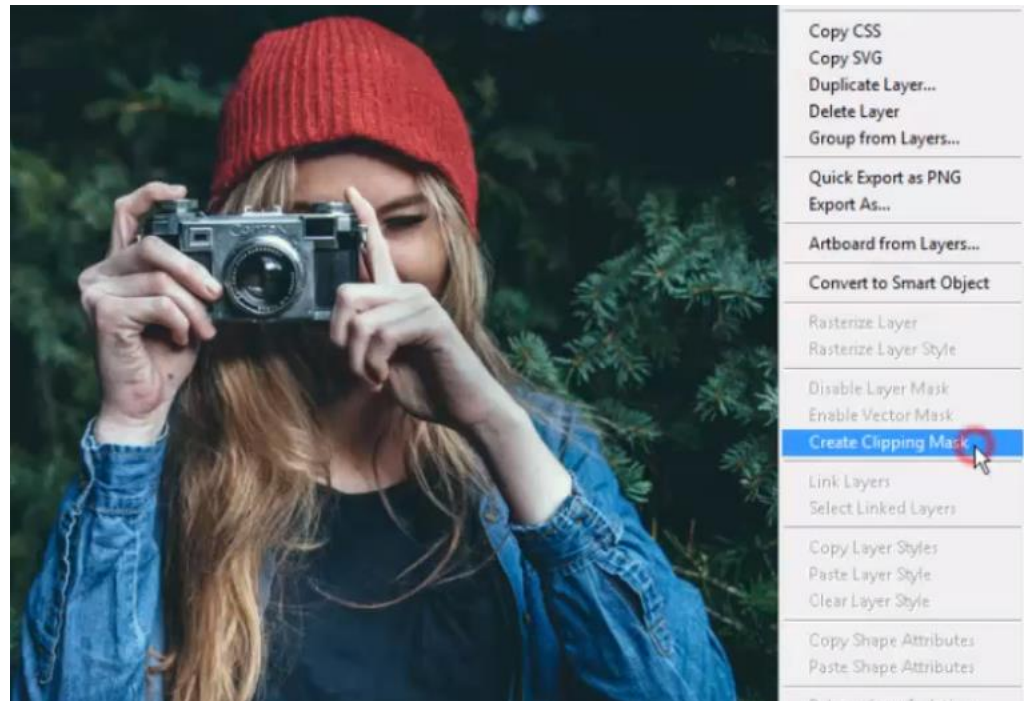




Adding a layer mask in Photoshop

레이어에 마스크를 적용해 특정 부분을 감추거나 보이게 하는 간단한 기능

<http://jktuts.com/199>









Search:

https://www.google.co.kr/search?q=Creative+Collage+Effect&tbm=isch&tbs=rimg:CW1fmRVSeF1yIjiRyW8bM4Jdl3suaxcno0wUs6RSzE7SGAAb2_1aliGBjXhLGx6iJts4QLHr37U1fLUwgSZL6bRn-ayoSCZHJbxszgl2XEVSct5W8nnhQKhIJey5rFyejTBQR3_1i79FrZgg4qEgmzpFLMTtIYABF_1SUSR2qYesioSCRvb9qWIYGNeeuh1Qxa-GbKhIJEsbHqIm2zhAREyh8V16p3hIqEgksevftTV8tTBFV1k71jnN-tCoSCSBJkvptGf5rEX_1Yy_1oMbEkJ&tbo=u&sa=X&ved=0ahUKEwjJp-6Zu7HWAhVGa7wKHaNqA9IQ9C8IHw&biw=1440&bih=770&dpr=1#imgdii=dtQ_h9TgFUiJ-M:&imgsrc=dooJacovJYGRTM: